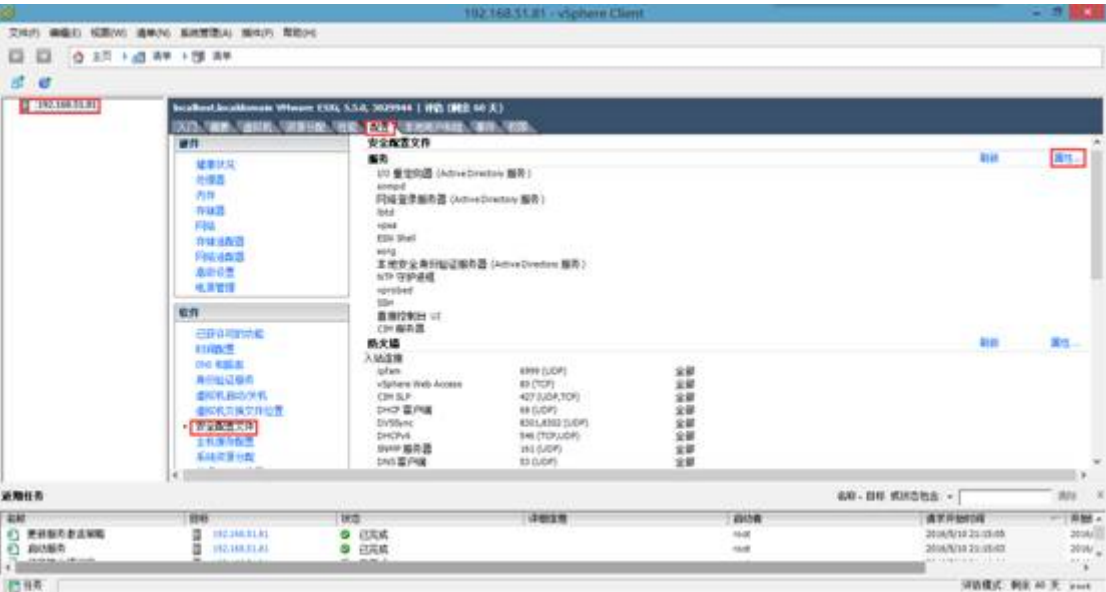
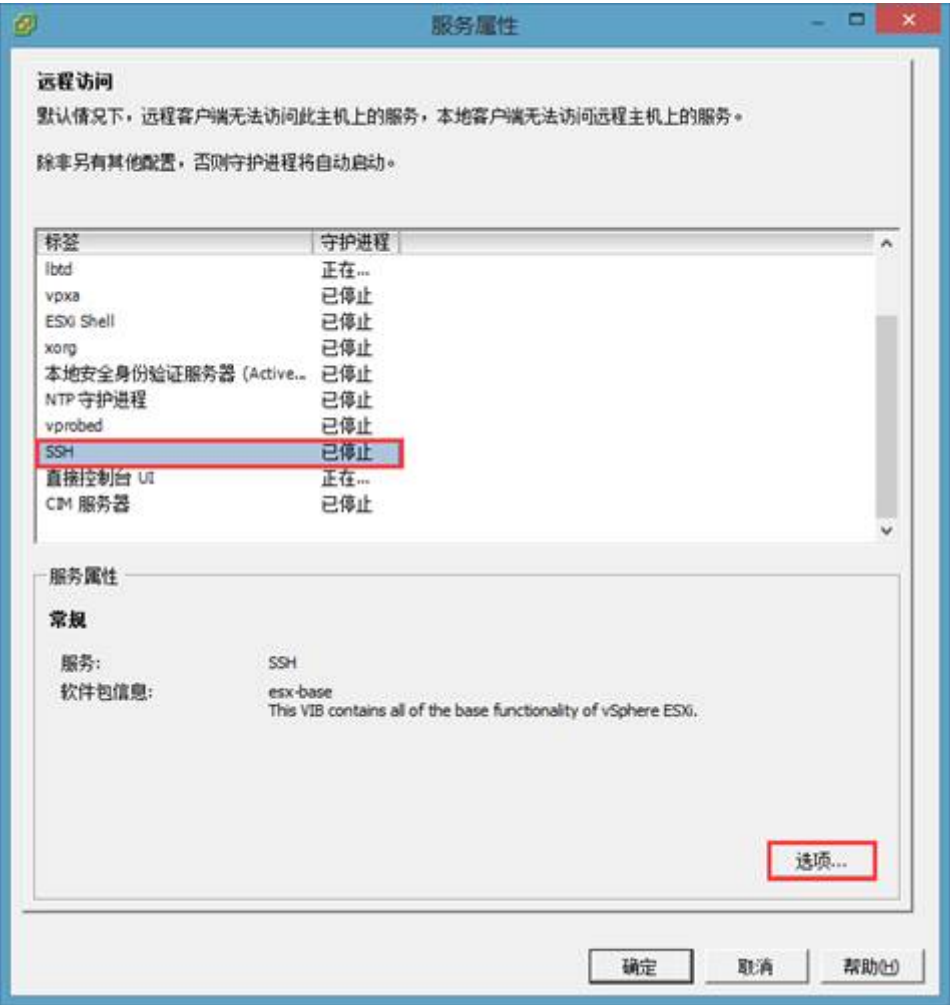
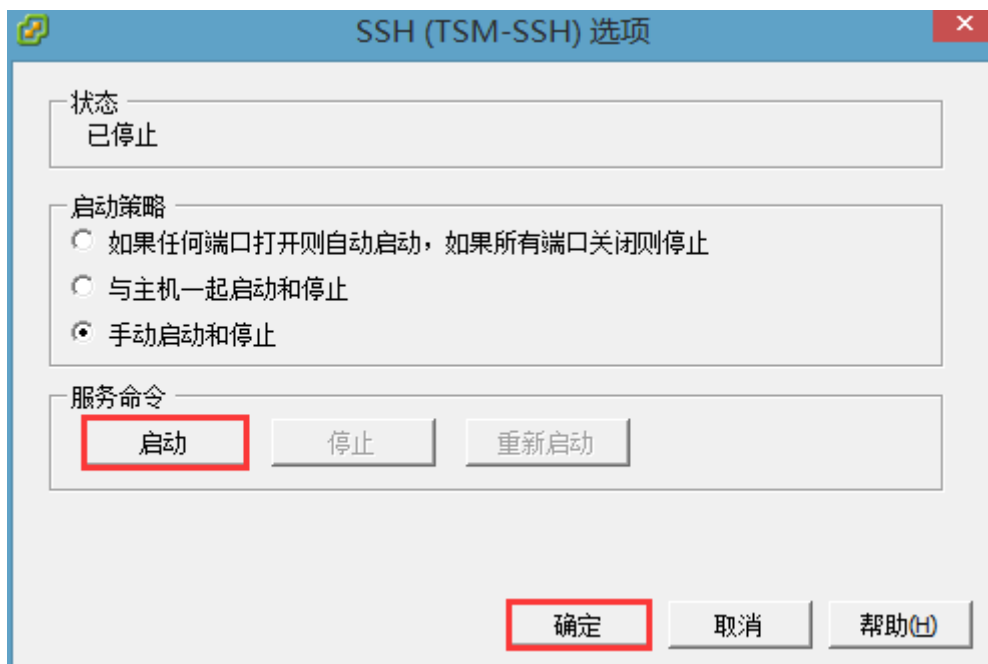


启动ESXi SSH服务，选择要升级的ESXi服务器，点击“配置”-“安全配置文件”，选择安全配置文件“属性”。

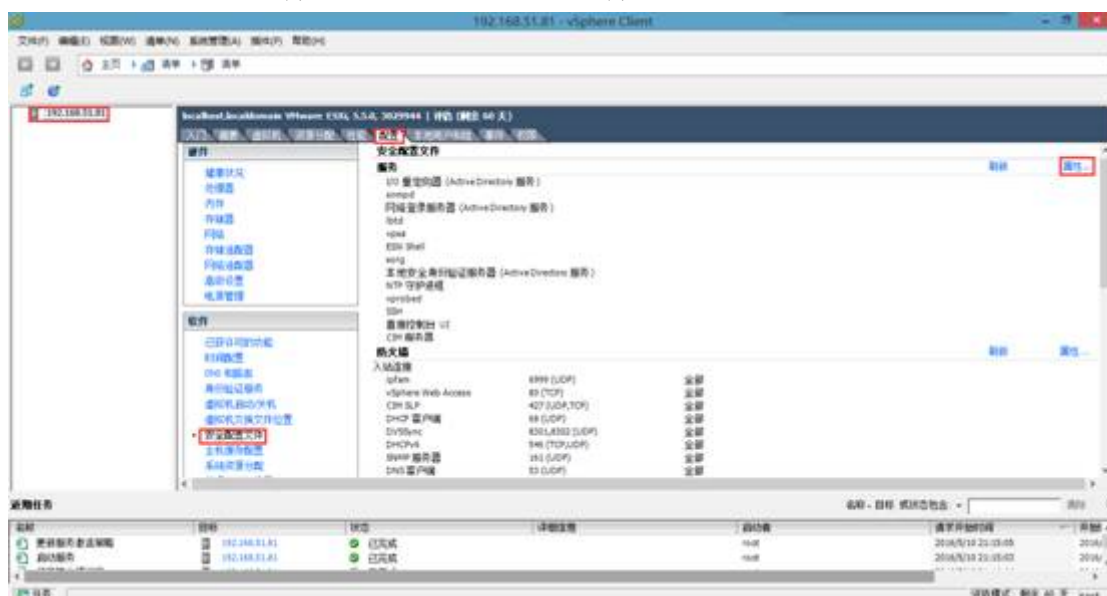


在服务属性对话框中选择“SSH”服务，点击“选项”。

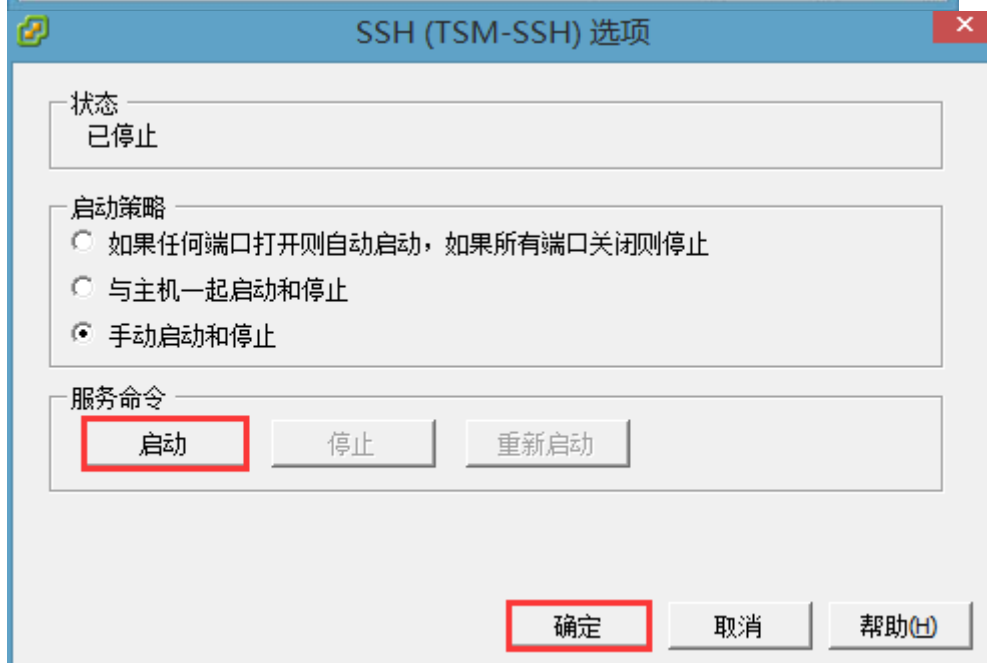
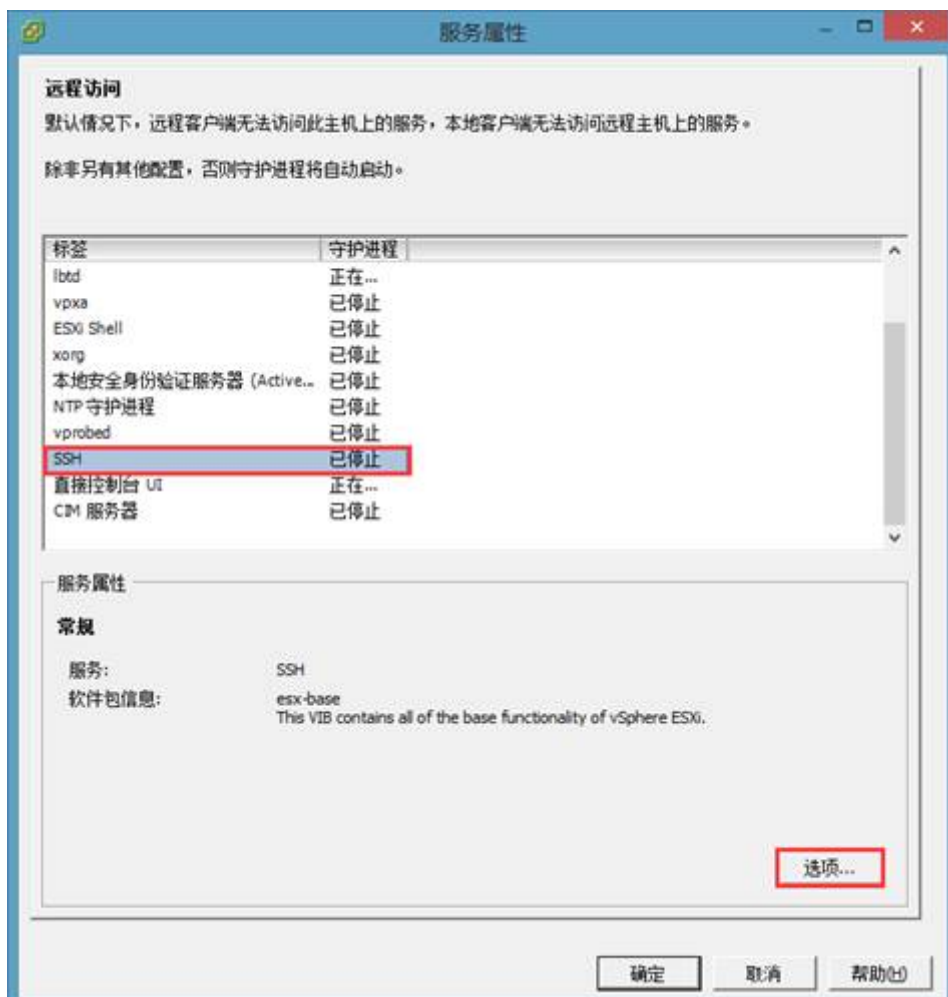




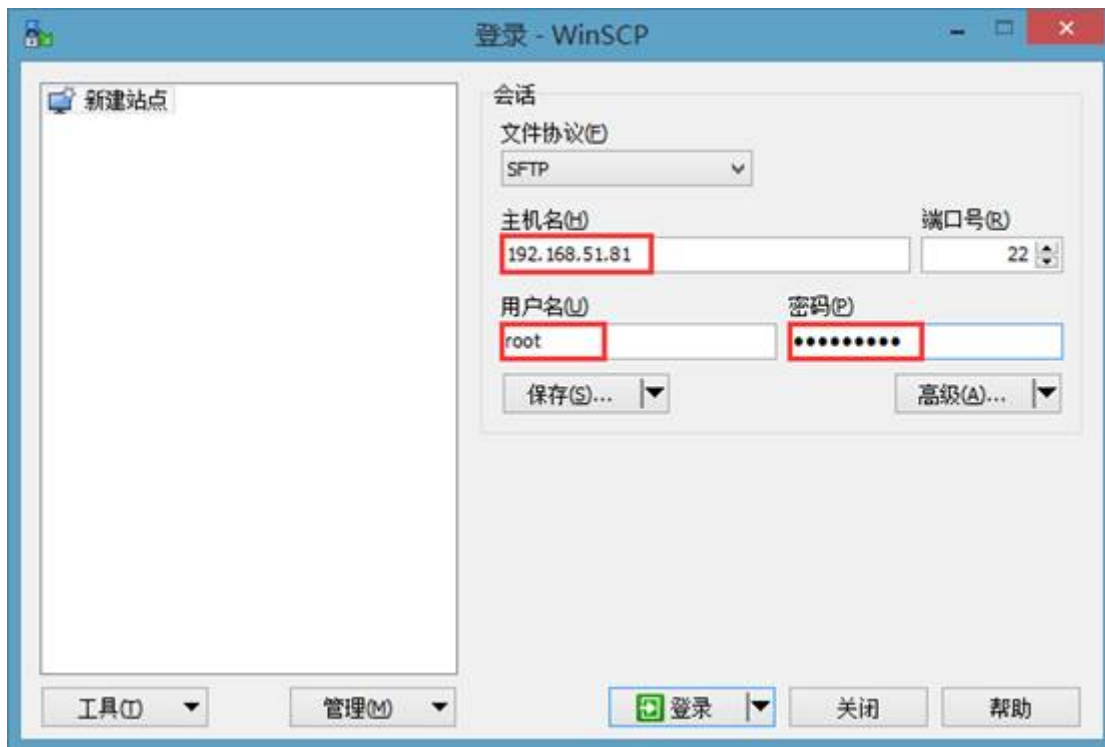
通过WinSCP工具，将驱动启动ESXi SSH服务，选择要升级的ESXi服务器，点击“配置” - “安全配置文件”，选择安全配置文件“属性”。



在服务属性对话框中选择“SSH”服务，点击“选项”。



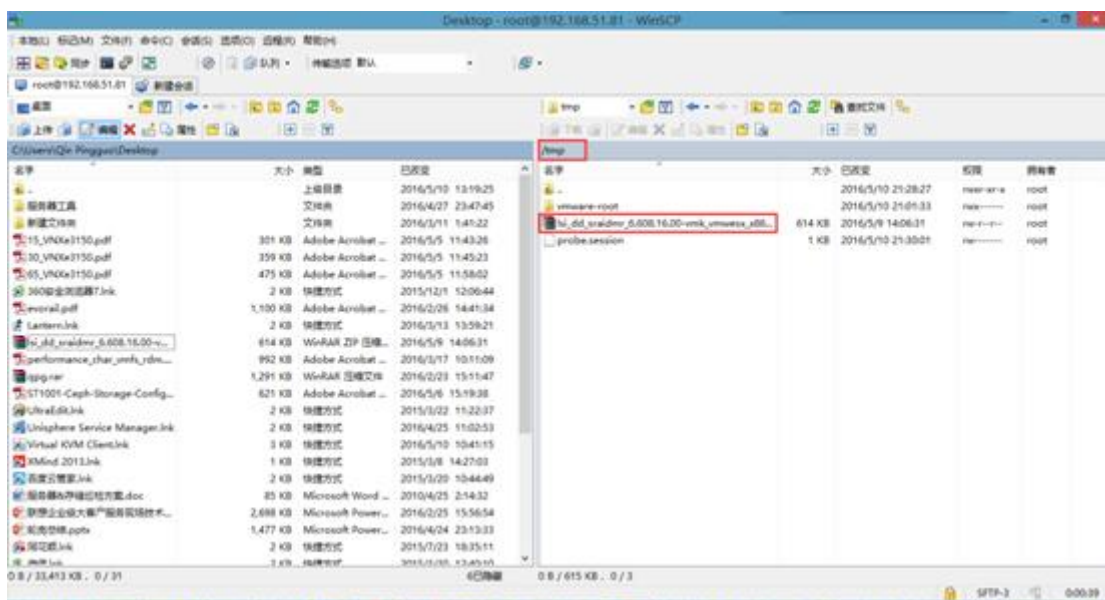
通过WinSCP工具，将驱动上传到ESXi服务器上/tmp目录里



下面为最新驱动程序:



**megaraid\_sas-6.608.16.00-5.5-3270573.zip**



使用esxcli命令查看当前驱动版本

```
~ # esxcli config module -l | grep lsi*
lsi_mr3                2          80
lsomcommon             2          224
~ #
```

```

~ # esxcfg-module -i lsi_mr3
esxcfg-module module information
input file: /usr/lib/vmware/vmkmmod/lsi_mr3
License: GPLv2
Version: 0.255.03.01-2vmw.550.3.68.3029944
Name-space:
Required name-spaces:
  com.vmware.vmkapi@v2_2_0_0
Parameters:
  max_sectors: int
    Maximum number of sectors per IO command
~ #

```

使用unzip命令解压驱动程序

```

/tmp # unzip -o megaraid_sas-6.608.16.00-5.5-3270573.zip
Archive: megaraid_sas-6.608.16.00-5.5-3270573.zip
  inflating: megaraid_sas-6.608.16.00-5.5-offline_bundle-3270573.zip
  inflating: scsi-megaraid-sas-6.608.16.00-10EM.550.0.0.1331820.x86_64.vib
  inflating: doc/README.txt
  inflating: doc/release_note_scsi-megaraid-sas_6.608.16.00-10EM.550.0.0.1331820.txt

```

注意：驱动路径一定要为绝对路径

使用下列命令对驱动进行升级

```

/tmp#esxcli software vib install -v /tmp/scsi-megaraid-sas-6.608.16.00-10EM.550.0.0.13

```

```

/tmp # esxcli software vib install -v /tmp/scsi-megaraid-sas-6.608.16.00-10EM.550.0.0.1331820.x86_64.vib
Installation Result
  Message: The update completed successfully, but the system needs to be rebooted for the changes to be effective.
  Reboot Required: true
  VIBs Installed: Avago_bootbank_scsi-megaraid-sas_6.608.16.00-10EM.550.0.0.1331820
  VIBs Removed:
  VIBs Skipped:
/tmp #

```

禁用自带驱动程序，并重启新启动服务器。

```

/tmp # esxcfg-module -d lsi_mr3
/tmp #

```

重启以后查看新安装的驱动是否已正常加载。

```

~ # esxcfg-module -l |grep megaraid*
megaraid_sas          1      108
~ #

```

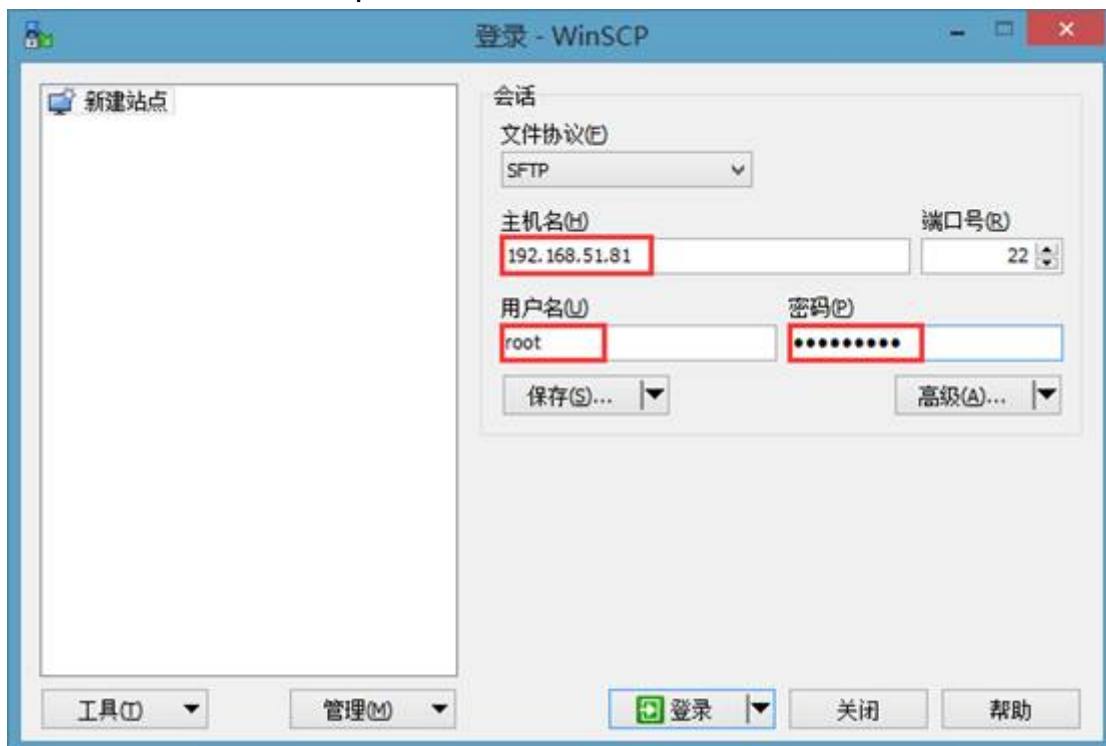
查看正常加载的驱动版本。

```

~ # esxcfg-module -i megaraid_sas
esxcfg-module module information
input file: /usr/lib/vmware/vmkmmod/megaraid_sas
License: GPL
Version: Version 6.608.16.00, Build: 1331820, Interface: 9.2 Built on: Oct 19 2015
Name-space:
Required name-spaces:
  com.vmware.driverAPI@9.2.2.0
  com.vmware.vmkapi@v2_2_0_0
Parameters:
  class_event_print: int
    To print Event details. Default: 2
  cmd_per_lun: int
    Maximum number of commands per logical unit (default=128)
  disable_dual_qd: int
  megasas: Set TRUE to disable iMR extended QD feature
  fast_load: int
    megasas: Faster loading of the driver, skips physical devices! (default=0)
  heap_initial: int
    Initial heap size allocated for the driver.
  heap_max: int
    Maximum attainable heap size for the driver.
  lb_pending_cmds: int
    Change raid-1 load balancing outstanding threshold. Valid Values are 1-128. Default
: 4
  max_sectors: int
    Maximum number of sectors per IO command
  msix_disable: int
    Disable MSI interrupt handling. Default: 0

```

上传到ESXi服务器上/tmp目录里

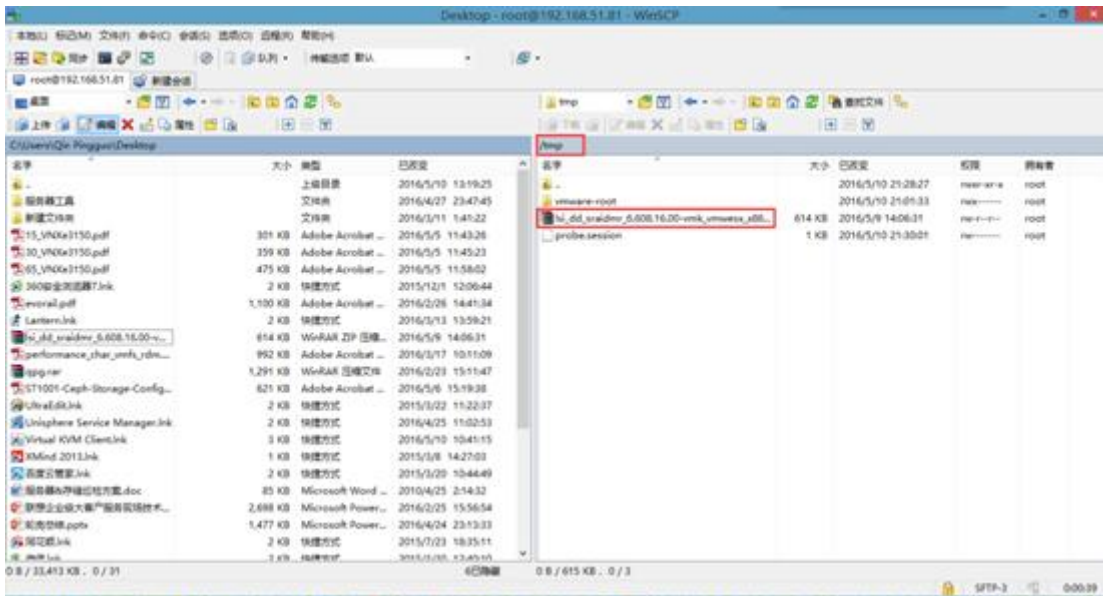


下面为最新驱动程序:



**megaraid\_sas-6.608.16.00-5.5-3270573.zip**





使用esxcli命令查看当前驱动版本

```
~ # esxcli module -l |grep lsi*
lsi_mr3          2      80
lsomcommon       2     224
~ # 
~ # esxcli module -i lsi_mr3
esxcli module module information
input file: /usr/lib/vmware/vmkmmod/lsi_mr3
License: GPLv2
Version: 0.255.03.01-2vmw.550.3.68.3029944
Name-space:
Required name-spaces:
  com.vmware.vmkapi@v2_2_0_0
Parameters:
  max_sectors: int
  Maximum number of sectors per IO command
~ #
```

使用unzip命令解压驱动程序

```
/tmp # unzip -o megaraid_sas-6.608.16.00-5.5-3270573.zip
Archive: megaraid_sas-6.608.16.00-5.5-3270573.zip
  inflating: megaraid_sas-6.608.16.00-5.5-offline_bundle-3270573.zip
  inflating: scsi-megaraid-sas-6.608.16.00-10EM.550.0.0.1331820.x86_64.vib
  inflating: doc/README.txt
  inflating: doc/release_note_scsi-megaraid-sas_6.608.16.00-10EM.550.0.0.1331820.txt
```

注意：驱动路径一定要为绝对路径

使用下列命令对驱动进行升级

```
/tmp#esxcli software vib install -v /tmp/scsi-megaraid-sas-6.608.16.00-10EM.550.0.0.1331820.x86_64.vib
```

```
/tmp # esxcli software vib install -v /tmp/scsi-megaraid-sas-6.608.16.00-10EM.550.0.0.1331820.x86_64.vib
Installation Result
  Message: The update completed successfully, but the system needs to be rebooted for the changes to be effective.
  Reboot Required: true
  VIBs Installed: Avago_bootbank_scsi-megaraid-sas_6.608.16.00-10EM.550.0.0.1331820
  VIBs Removed:
  VIBs Skipped:
/tmp #
```

禁用自带驱动程序，并重启新启动服务器。

```
/tmp # esxcfg-module -d lsi_mr3  
/tmp #
```

重启以后查看新安装的驱动是否已正常加载。

```
~ # esxcfg-module -l |grep megaraid*  
megaraid_sas          1      108  
~ #
```

查看正常加载的驱动版本。

```
~ # esxcfg-module -i megaraid_sas  
esxcfg-module module information  
input file: /usr/lib/vmware/vmkmmod/megaraid_sas  
License: GPL  
Version: Version 6.608.16.00, Build: 1331820, Interface: 9.2 Built on: Oct 19 2015  
Name-space:  
Required name-spaces:  
  com.vmware.driverAPI@9.2.2.0  
  com.vmware.vmkapi@v2_2_0_0  
Parameters:  
  class_event_print: int  
    To print Event details. Default: 2  
  cmd_per_lun: int  
    Maximum number of commands per logical unit (default=128)  
  disable_dual_qd: int  
    megasas: Set TRUE to disable iMR extended QD feature  
  fast_load: int  
    megasas: Faster loading of the driver, skips physical devices! (default=0)  
  heap_initial: int  
    Initial heap size allocated for the driver.  
  heap_max: int  
    Maximum attainable heap size for the driver.  
  lb_pending_cmds: int  
    Change raid-1 load balancing outstanding threshold. Valid Values are 1-128. Default  
: 4  
  max_sectors: int  
    Maximum number of sectors per IO command  
  msix_disable: int  
    Disable MSI interrupt handling. Default: 0
```